

A wide-angle photograph of a mountain landscape. In the foreground, a steep, green mountain slope rises from the bottom left towards the center. A narrow, rocky path leads up the slope. In the middle ground, a hiker is standing on a ridge, looking out over the valley. The background features a series of jagged mountain peaks, some covered in green vegetation and others in shadow, creating a sense of depth. The sky is filled with soft, white clouds.

Sustainability at Salomon

WHO WE ARE

OUR BRAND PURPOSE

Unleash the best in people through
mountain sports



SALOMON

CHANGE OUR TOMORROW, OUR REGENERATIVE
TRANSFORMATION BY 2030

OUR
VISION

OUR
AMBITIONS

CREATING AGENTS OF CHANGE



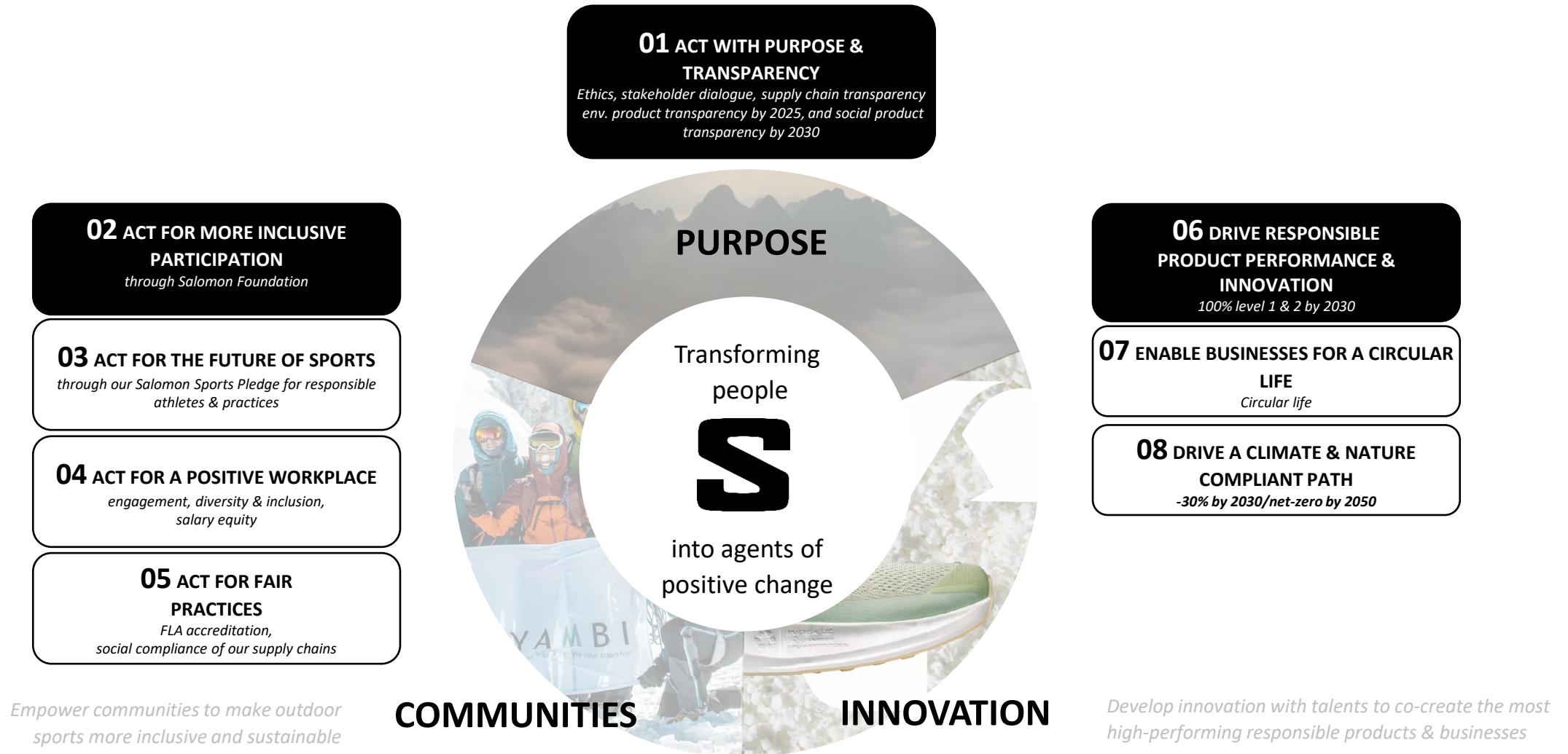
**CHANGE
WITH
COMMUNITIES**



**CHANGE
WITH
INNOVATION**

CHANGE OUR TOMORROW 2030

[Impact report \(salomon.com\)](https://salomon.com/impact-report)



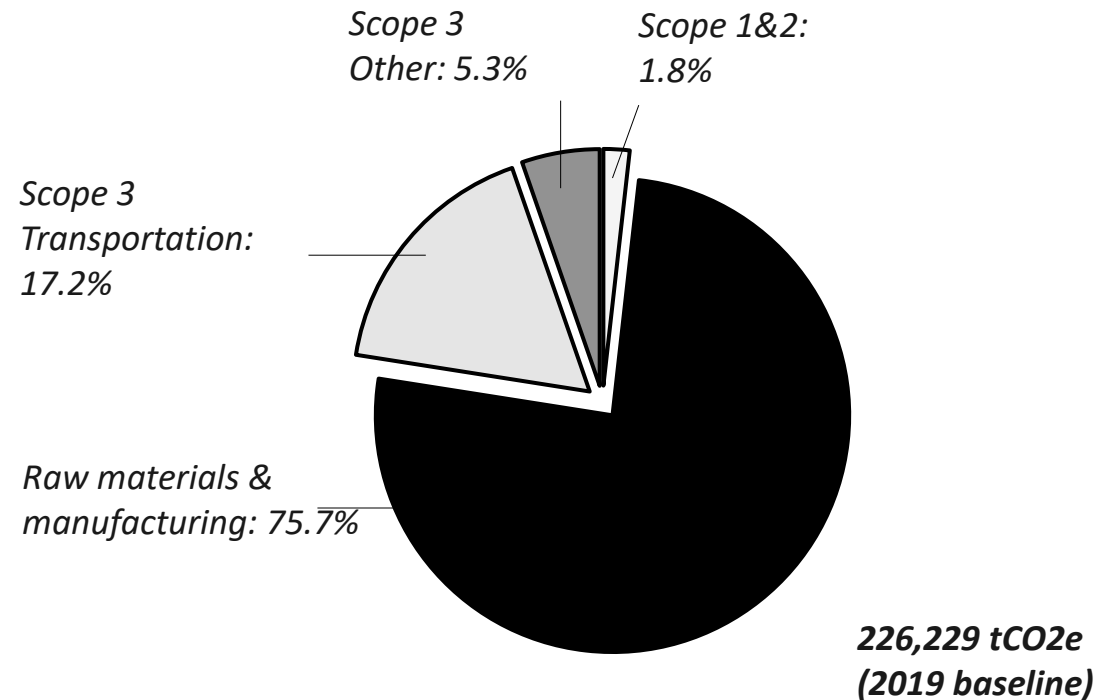
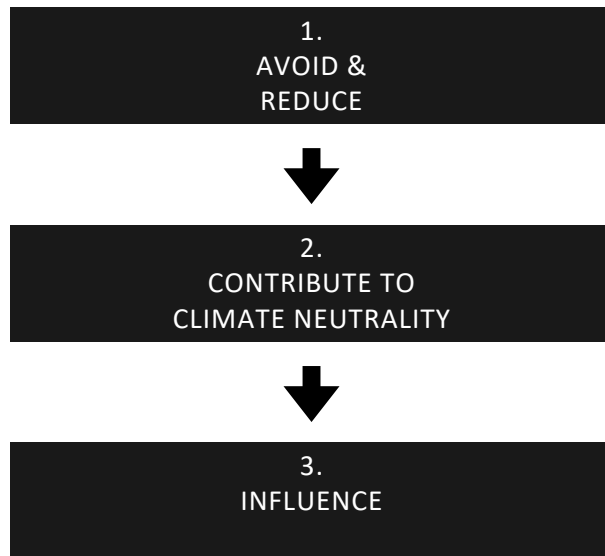
OUR CLIMATE COMMITMENTS



First leading wintersports company
with validated SBT

“Salomon commits to a 50% absolute reduction of GHG emissions for
scopes 1 and 2,

and a 30% absolute reduction for scope 3 by 2030 from a 2019 baseline,
and to becoming Net-Zero by 2050”.



LCA = Life Cycle Analysis

Life Cycle Assessment (LCA) is a method used to evaluate the environmental impacts of a product or service throughout its life cycle, from raw material extraction to disposal. In other words, it measures the ecological footprint of a product by considering all stages of its production, use, and end-of-life disposal.

This is the most useful tool to improve ourselves and to reduce the impact of our product (example of the MTN Range)

Deliver toward **coming regulations** – DPP and article 15 of the French AGEC law

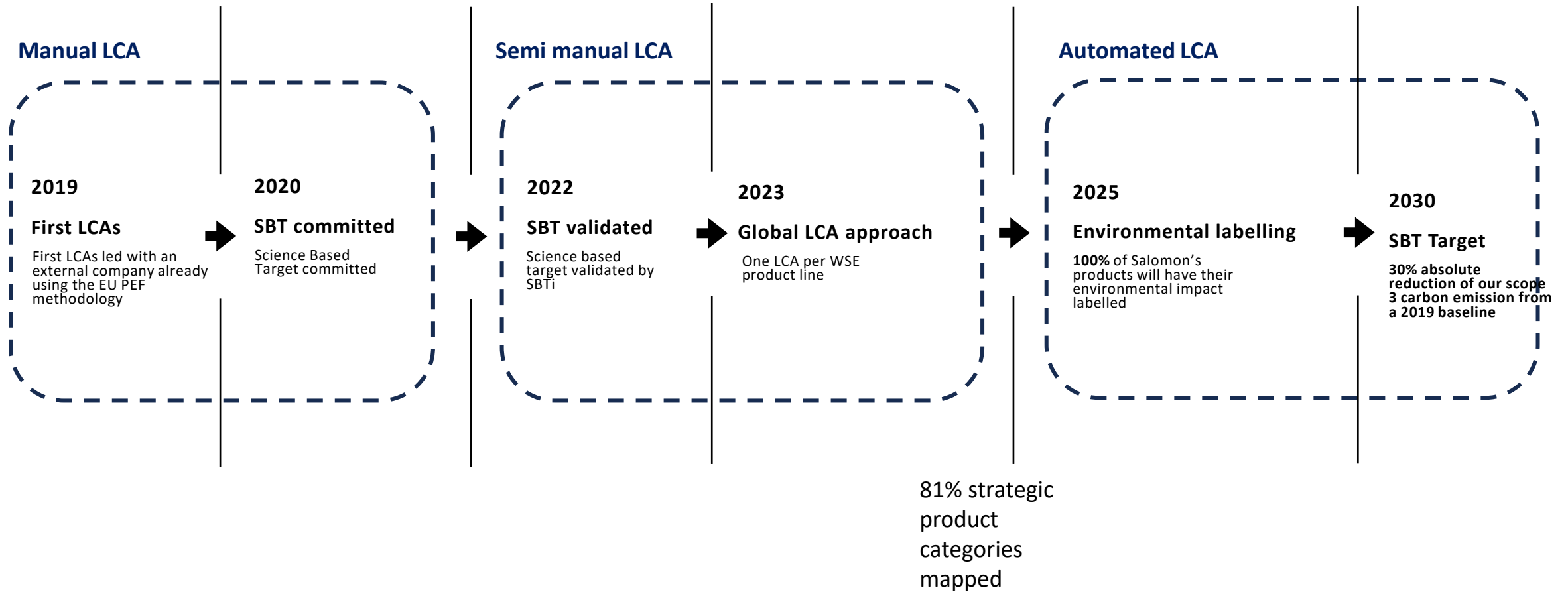
SALOMON objective: 100% of our products have their environmental impact visible by 2025

Deliver towards **customers' requests**

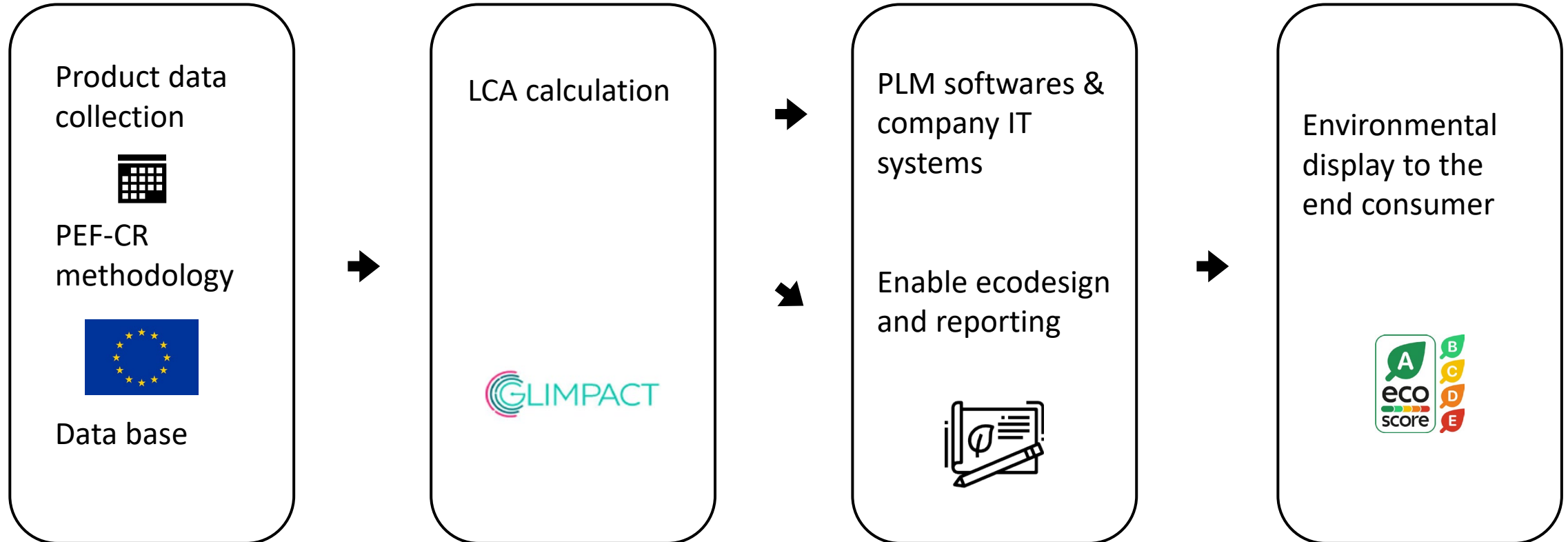


Implementing an **automatized & rapid LCA^(*)** process is mandatory

SALOMON'S LCA JOURNEY



OUR TARGETED PROCESS





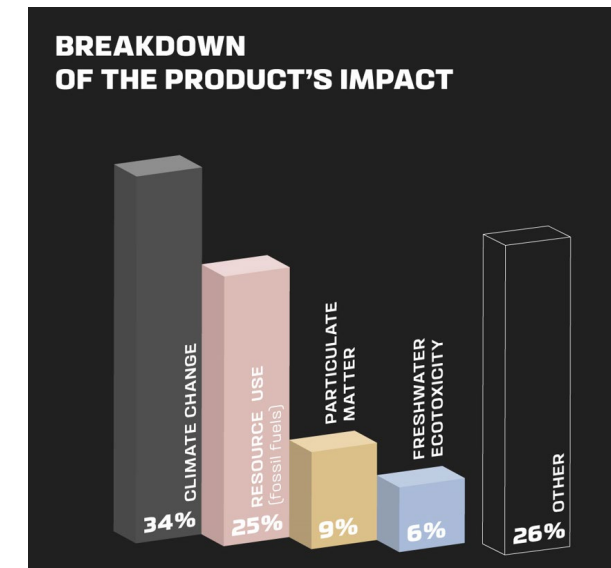
BASED ON THE EU METHODOLOGY

All our LCAs are based on the **EU methodology**:

PEF method 3.0 or 3.1, based on

ISO standards ISO 14040 and ISO 14044

Highlighting weighting factors for each impact category



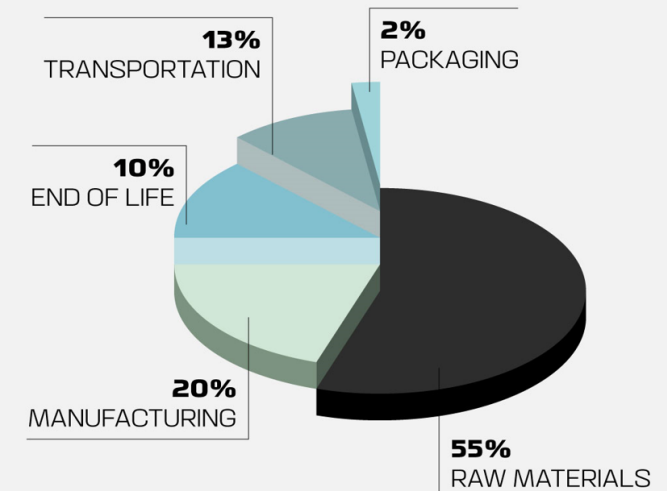
Breakdown of the environmental impact of a Salomon's Snowboard



KNOWING THE ENVIRONMENTAL IMPACT OF OUR PRODUCTS

Having an **LCA** before starting new product development helps our teams integrate an **eco-design** process.

CLIMATE CHANGE IMPACT PER LIFECYCLE STAGE



Results for a Salomon's snowboard



SUSTAINABILITY AT THE HEART OF OUR DEVELOPMENT

The use of a **simplified LCA tool** helps compare possible solutions.

Highlighting **the most impactful components in** the previous version helps focus our efforts.

Implementing **sustainable KPI** during the development process helps **follow up and monitor**.

WE SHARE OUR RESULTS TO THE WHOLE INDUSTRY

Salomon Winter Sports Opens its Books on Skis, Snowboards, Boots and Bindings Life-Cycle Assessment

Sep. 07th, 2023 5 min read ♡ 20 likes

OPEN-SOURCING OUR KNOWLEDGE ON INNOVATION AND IMPACT MEASUREMENT

Salomon has conducted life-cycle assessments (LCAs) across the company's product range in order to **know the environmental impact of each step in the product creation process, from the sourcing of materials all the way to the product end-of-life management**. The study, which began in 2019, was undertaken with the goal of understanding the environmental impact of Salomon's product offering to create a reference that will push the industry toward more sustainable product design.

You can find the article here : [Salomon Winter Sports Opens its Books on Skis, Snowboards, Boots and Bindings Life-Cycle Assessment | Salomon](#)

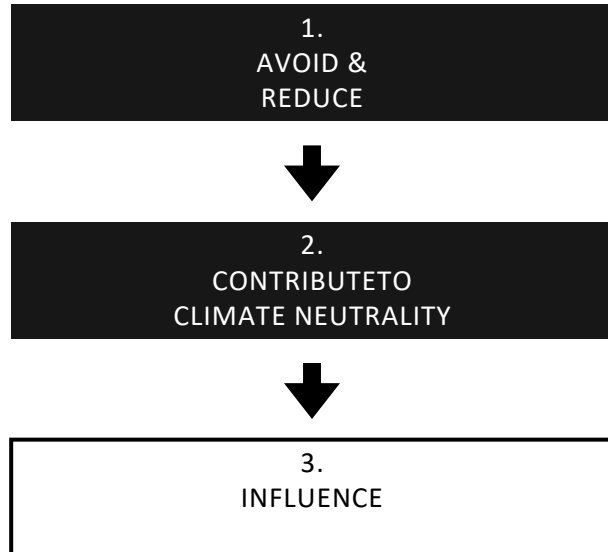
COLLECTIVE COMMITMENT & COLLABORATIVE ACTION: THE ONLY WAY
FORWARD FOR OUR INDUSTRY

SIA



SCIENCE
BASED
TARGETS
DRIVING AMBITIOUS CORPORATE CLIMATE ACTION

SUSTAINABILITY



SALOMON

Share
Collaborate
Join forces & voices



as a wintersports industry

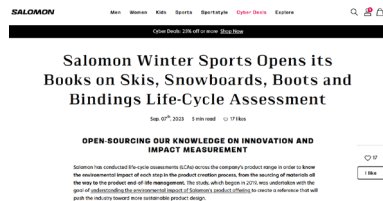


A **common PEF-CR (a LCA methodology)** for the winter sports industry is **mandatory** to allow comparison between products

A **methodology based on the PEF method** will help to comply to coming EU regulations



Support the wintersports industry into developing
a **strong FESI-Wintersports Sustainability Network**



Keep sharing about our climate efforts
and LCAs
Reach out to our teams!



SALOMON

A wide-angle photograph of a mountain range. The foreground shows a steep, grassy slope with a narrow dirt path. Two hikers are visible on the path, one standing and one sitting. The background features a series of jagged mountain peaks, some covered in green vegetation and others in shadow, creating a sense of depth and scale. The sky is overcast with soft, diffused light.

THANK YOU

Teo.marin@salomon.com

SALOMON